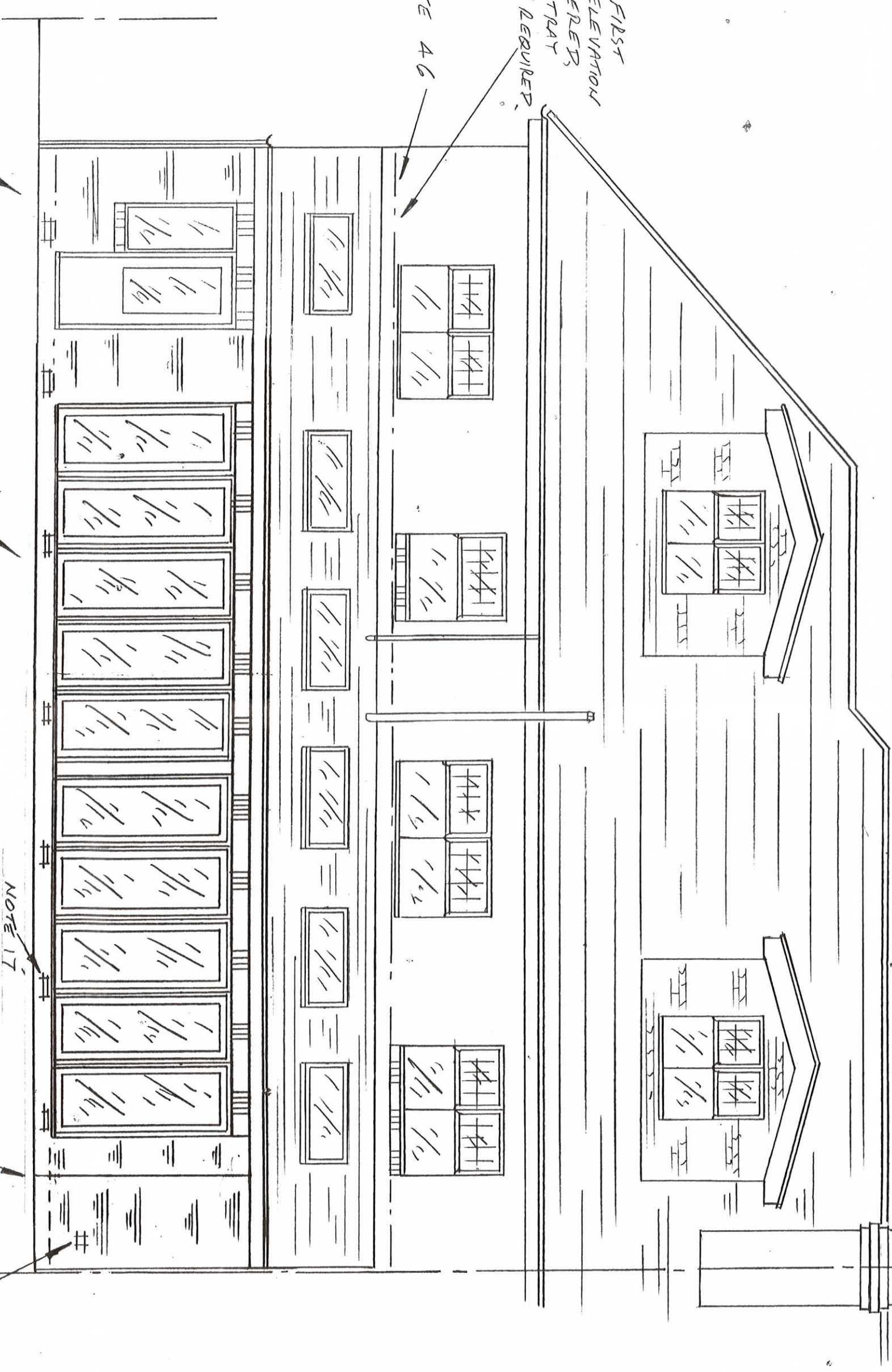


N.B. AS FIRST FLOOR ELEVATION IS RENDERER CAVITY TOY IS NOT REQUIRED.

NOTE 4 G

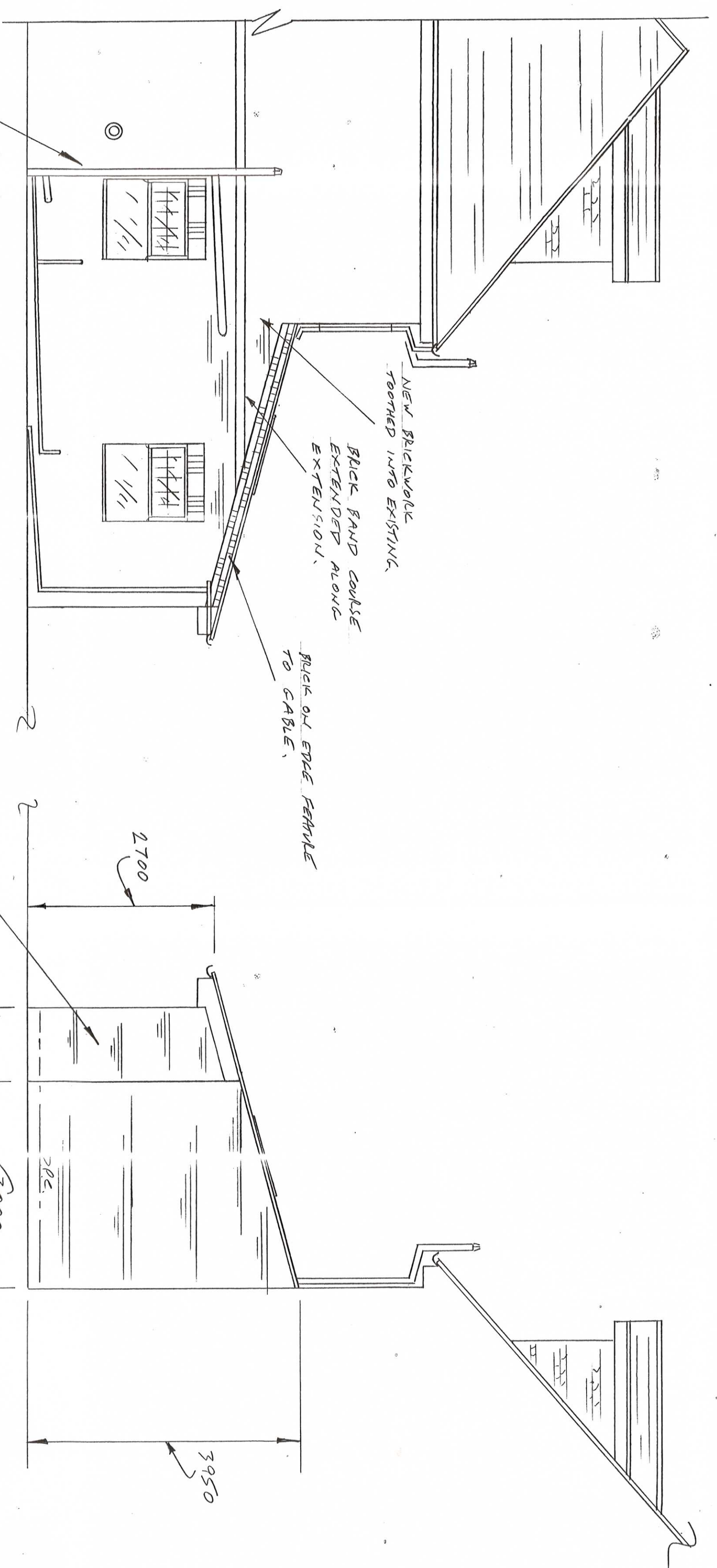


DEMOLISH AND RE-BUILD REAR WALL TO UTILITY ROOM TO AVOID HATCHWORK EFFECT TO BRICKWORK AND MOHAR.

BI-FOLD DOORS TO BE DOUBLE GLAZED AS NOTE 11, DOORS TO HAVE VENT. STRIP AND 19000 MM² AND MULTI-LOCK FACILITY. DOORS AND WINDOW TO BE WHITE UPVC.

ALL NEW BRICKWORK TO BE CAREFULLY HATCHED WITH EXISTING.

PATENT STOVE ROOM VENTILATOR WITH EXTERNAL COVER.



EXTEND EXISTING STUB STACK TO TAKE RE-DIRECTED WASTE FROM BATHROOM/EN-SUITE.

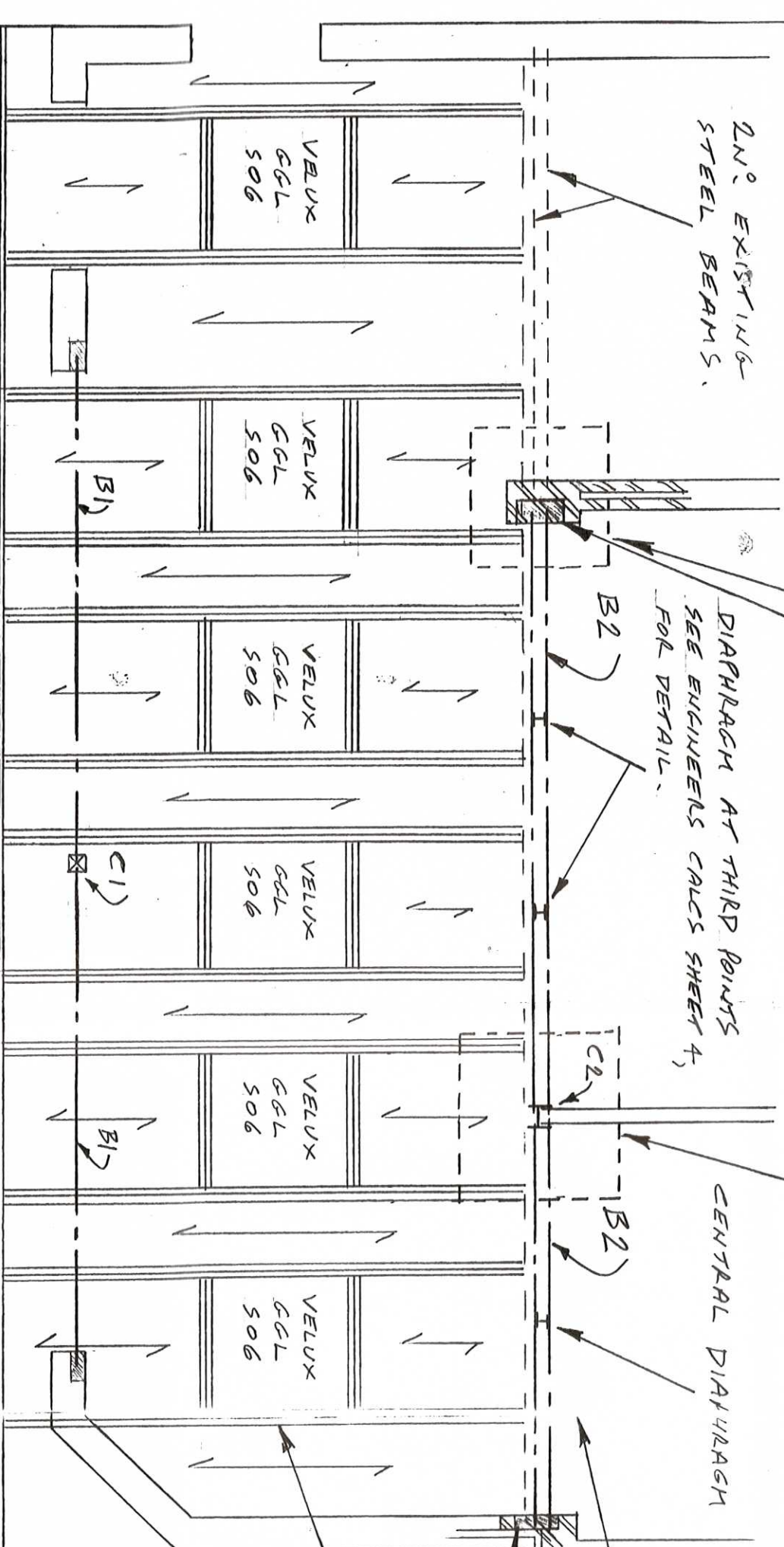
1200x1200x300 DEEP CONC. PAD FOUNDATION WITH A393 STEEL MESH IN BOTTOM MUR COVER 40.

200x450x150 DEEP CONC. RADSTONE.

2M² EXISTING STEEL BEAMS.

DIAPHRAGM AT THIRD JOINTS SEE ENGINEER'S CALC'S SHEET 4, SOL DETAIL.

CENTRAL DIAPHRAGM



ROOF TRUSSING PLAN

BEAM B1, USE 152x152x23Kg V.C. WITH 150x50 TIMBER BATED TO TOP FLANGE AND 255x THICK N.S. PLATE WELDED TO BOTTOM FLANGE, SEE ENGINEER'S CALC'S SHEET 3 FOR DETAIL. OUT TO 215x100x150 DEEP CONC. RADSTONE EACH END.

CENTRAL COLUMN C1, USE 100x100x4.0 STEEL HOLLOW SECTION WITH CAP AND BASE PLATE SEE ENGINEER'S CALC'S SHEET 3, FOR COLUMN AND FOUNDATION DETAIL.

BEAM B2, USE 2N² 305x127x37Kg UB¹ ONE UNDER EACH LEAF ONTO COLUMN C3, AND BRICK END BEARING, SEE ENGINEER'S CALC'S SHEET 4, FOR DIAPHRAGM DETAIL.

COLUMN TO KITCHEN/DINING C2, USE 203x203x46Kg V.C. WITH CAP AND BASE PLATE AS ENGINEER'S CALC'S SHEET 7

PLAN

APPROVED

810395/15/HRU

MR & MRS. D. CLAHAM

151 KINE GOULDE ROAD SOUTH SHIELDS NE34 0EU

PROPOSED SINGLE STOREY REAR EXTENSION TO SEMI-DETACHED HOUSE

PLANS DRAWN FOR YOUR HOME EXTENSION	DRAWING TITLE
TEL. JOHN HORTON 0191-454 3870	PROPOSED ELEVATIONS
MOBILE 07435 969151	APPROVED
DATE 27-2-2015	SCALE 1:50
	DRAWING NUMBER 2015-014
	SHEET 4 OF 5 SHEETS
	REVISION 'A'

SECTION XX SHOWING BATHROOM/EN-SUITE WASTES RE-DIRECTED TO SIDE ELEVATION

WASTES BOXED-IN TO U/SIDE OF ROOF SEE SECTION WW